



*a Faith Community in the
Anglican Church of Canada*

May 2022

Current COVID-19 Protocols and Church ReOpening Measures

As of this writing, the current Diocesan guidelines for Covid encourage us to still wear tight-fitting masks while in the congregation. Readers are allowed to remove them, as they wish, if parishioners are at least 12 feet in front of the lectern. We can sing while wearing masks and we are encouraged to have more participation in reading psalms and prayers as appropriate.

Self-screening for Covid symptoms is still needed, and parishioners are encouraged to use the hand sanitizer at the entrances. Login sheets are no longer required, but persons who attend worship services who test positive for Covid-19, or is a close contact of a Covid case need to advise the Wardens immediately.

Capacity is suggested to be as many as possible while maintaining the 6 foot (slightly less than 2 meters) distancing between any separate social bubbles. This means we are able to seat individuals centrally in the alternate pews and chairs are available for those who may prefer to sit more isolated at the back of the nave.

On Sunday, May 15th and going forward we are allowing entry by the front Pearl Street doors and the accessibility entrance. The accessibility entrance will be locked at the start of service just before 10 and a sign at that door will direct late comers to the Pearl St entrance. As the summer temperatures prevail we shall stand the front doors open as an invitation to enter for Sunday service.

At the present time we expect to have coffee/tea time on the first, third and fifth Sundays which will occur in May, July and October. Snack food may be available in the future but for now it will be liquid refreshments only.

Your Wardens, Jim, Sheila and David

We are Open!
And we hope to see you soon!

Events Not to be Missed!

- June 12 we will be celebrating Gathering Table's 4th Anniversary (June 4th is the official date) with coffee hour outside on the front lawn. There will be a tent outside in the event of inclement weather.
- June 19 Archbishop Anne Germond will be presiding and preaching followed by coffee hour.
- September We will be celebrating 150 years of worship at 228 Pearl Street. Watch for updates!

Gathering Table's Mission Statement

We are on a spiritual journey as a dynamic, inclusive, diverse community rooted in the life-giving, life-affirming and life-changing love of God, reaching beyond ourselves, caring for creation and making a difference for others. Come and meet us, we'd love to meet you.

(From Discernment Committee)

We would love to hear from you! Do you feel this reflects the mission of our church?

Drop us a line or send us an email with your thoughts. Title it "My thoughts on Gathering Table's Mission Statement."

Thank you!

The 150th Year of Worship at 228 Pearl Street

It is remarkable that 2022 will be a significant milestone in the history of this building and this location as a place of worship. The original and small structure of unplanned sheeting, at a cost of \$2,800.00 and a parsonage costing \$900.00 was built on the present property in 1872. According to the Algoma Missionary News and Shingwauk Journal this was “the principle strength of the Mission of Thunder Bay”. This name of course comes from the actual bay enclosed by the Sibley Peninsula.

Here are some notes from the 75th Anniversary Booklet of September 14, 1947.

“From an original congregation of 18, outposts at Fort William, Silver Islet and Oliver township where services were held in school rooms and private homes” were developed.

When the original structure including the rectory burned to the ground in 1881 the new Church “sufficiently large to sit two hundred and fifty people” would be constructed. Then on Feb 1st 1884 “the new church for this mission is to be brick veneered and to cost when complete, \$6,500.00. It is shingled, but brick cannot be laid at 30 degrees below zero. It is to seat 300 and will be completed by the beginning of June. Debt \$2000.00.”

The “new” church held it’s first services on the 27th of July 1884 and the offerings amounted to \$257.00. “The church was very crowded at both morning and evening services. Confirmation was administered to 8 persons, and at each service His Lordship the Bishop of Algoma, the Rt. Rev. Edward Sullivan was the preacher. The sermons were models of dignified and effective oratory.”

These are some details and observations from a letter dated Dec. 31, 1877 by the Rev. J.K. McMorine.

“At present I have only one station, Prince Arthur’s Landing, where I hold morning and evening services. I also preside over Sunday School which consists of about 30 scholars and is held at 3 pm. I am happy to say it is steadily increasing and that we have now nearly every child which we can claim in the entire village.”

“I have lately been informed that there are three or four families of our communion at Silver Islet (24 miles away), and I shall visit them as soon as this Bay is frozen across.

So far as I know, the parish consists of about 45 families and 175 individuals. Two or three of these families as I have said are at the Shuniah Mine, ten at Fort William and the Town Plot, six on the Second river in the parish of Neebing, between the Fort and the Landing and the balance (27) are in the village. I never had more than twelve communicants, but there are, I believe, about 30 in the entire mission.

I do not think that there are any prospects of the congregation here becoming stronger numerically. The village is not growing at present, and should the policy of the present Government be carried out, I think the probabilities of growth are in favour of the Town Plot, the terminus of the C.P.R.R. (This might be the present Westfort) The population is a fluctuating one, and active, earnest workers, who are with us today - may be gone tomorrow. A considerable portion of those families we have are poor and unable to give much material assistance in Church work.”

Submitted by David Reid

*The Church of St. John the Evangelist,
Golden Jubilee 1884-1934. Rev. J.K.
McMorine, Rector 1884. Rev. A.J. Bull,
Rector 1934. Thunder Bay Library
archives.*



Gathering Table and Legacy Month: May 2022

Legacy giving answers two questions: “What do I value that may benefit future generations?” and “How do I want to be remembered?”. Donations may answer one or both questions. Legacy giving can be developed in two ways. A particular charity, or initiative within a charity may be gifted through a bequest in your Will. Another option is to purposely give on a regular basis, annually, quarterly, etc., to a charitable idea that you wish to see develop and succeed for future benefit.

Legacy givings, like charitable givings, generate a tax credit, reduce taxes, maximize income and estate value. Legacy giving need not mean taking inheritance from family, it can add a tax credit annually or on a final income tax return. The reduction in taxes benefits the family.

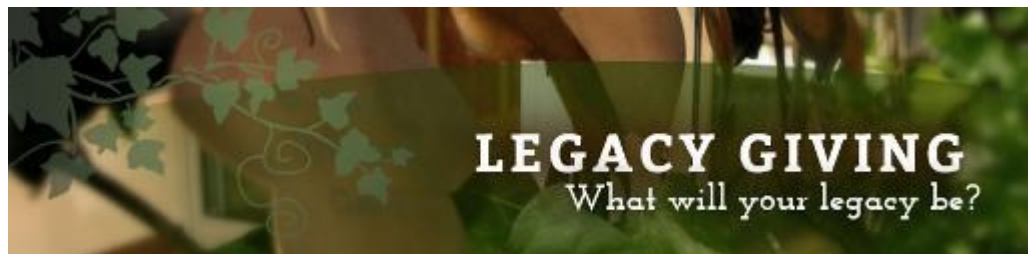
Aside from tax incentives, there are many other reasons to leave a legacy gift. Legacy giving is a way to leave a lasting memorial of your generosity and may make a cause you care about an important part of your life story. Your loved ones, and those around you, may be shaped by your values and commitment. Your

giving may cause others to think about their own values and inspire them to participate in community and to give back as well.

The community of Gathering Table has several programs that are future oriented to benefit the world about us in affirmative ways. The **Capital Fund** sustains the physical infrastructure of the property for future generations to use. The **Mission Endowment Fund** is purposed to support the enhancement of the wellbeing of the ‘neighbour’ community by assisting initiatives that uplift the life of the less well off, or those who are in need, or those facing disaster. The development of a discerning community to meet future challenges—to learn spiritually (John 16:13), to let the past go (Isaiah 43:16-21), to renew the mind (Romans 12:2), to love beyond self (John 13:34), and to nurture others (John 21:17)—is a function of an incumbent’s guidance supported by the **Stipend Endowment Fund**.

You don’t have to be wealthy to leave a legacy gift. As much or as little as you want—it all makes an impact on the future. Properly managed within sustainable guidelines Gathering Table’s Endowment Funds will live forever as a testament to your values and generosity.

Submitted by Dale Sparkes, Administrator: Stipend Endowment Fund.



Synod Resolutions and things we can all do!

- R2. That we are committed to the common good and to loving our neighbour, and we urge everyone, who is eligible or able, to be vaccinated by the end of October 2021.
- R3. That the synod delegates for 2023 bring cards from their congregations that identify the community-building ideas that were tried and worked, and the ideas that were tried and didn’t work between 2021-2023. We will be taking part in the Spring Clean Up .
- R4. Celebrate the National Day for Truth and Reconciliation (September 30) and plant orange flowers in your gardens. Submit pictures to the office.
- R5. Treebillee considering planting a tree/shrub in honour of the Queen’s Jubilee. Submit pictures to the office.
- R6. Thornloe University Course Awareness - consider taking a course through Thornloe . Dale Sparkes has written an article (following page) about his experiences.
7. Gratitude for Bishop Anne’s leadership: an ecard and a physical card for electronic and physical signing in process and will be presented at Archbishop Anne’s service on June 19th..

Hey There Gathering Table!

How would you like to help make the neighbourhood a bit cleaner?

Like last year, we are registered with the Spring Up to Clean Up program with Eco Superior which is supported by the City of Thunder Bay. They supply the bags and gloves, we supply the helpers to pick up trash. We'll meet at Field Street (south off 11th Ave near Wal-Mart) on Saturday May 28, from 10 AM to noon.

While we will be outside, please use your best personal discretion about wearing a mask and keeping 6 feet apart in these continuing COVID-times. If you wish, bring your own sturdy gloves and "picker-upper" too.



Please let Jim know you would like to join this community effort. Call 622-6263 or email fsutton@tbaytel.net.

Thanks!

Note: Although the cleanup was done before some of you are receiving this notice., it is happening once again this year. Through this we are working on Synod Resolution No. 3.

Church Gardens

The Church Gardens are growing nicely as of this writing and the tulips should soon be in full bloom. Trilliums from the back will be transplanted to the front Casino side garden. The rain barrels which we use for summer watering of the gardens have been put back in their place beside the old Parish House and some new edging along the 3 driveway gardens will be installed to help with lawn cutting.

It would be an advantage to remove the overgrown and "ratty" Cedars which are too tall to be managed, block sunlight from the stained glass windows and not suitable to be growing near building foundations. Does anyone with a chainsaw and/or trailer able to assist in this endeavour?

The deteriorating bench has been broken up to discourage gathering behind the house as we are constantly cleaning up garbage plus both drug and personal paraphernalia. The back garden, as reported at the February Vestry meeting, should be heavily trimmed or cut at a high setting by the mowers to discourage undesirable behaviour and overnight occupation. There are still some perennials in this garden that parishioners are free to remove and put in your own

gardens. We suggest you not do this alone but bring someone else with you for safety reasons. Once the Parish House is removed we hope that the back lawn might be levelled and become more usable for outdoor activities as a small Gathering Table "parkette".

There are always opportunities for added help with weekly watering and "deadheading" once perennial blooming takes place. No one should work alone, so pairing up is essential. Orange flowers as a symbol of reconciliation will be planted in the small garden at the foot of the Parish House stairs and one of the beds along the driveway.

David Reid and Erminie, *retired garden team leader*, Reid



Repent Through Thorneloe University

Often “repentance” is understood to mean being regretful or remorseful for some action (sin). This is a case of translation losing the original biblical meaning. *Repent* is the English translation of the Greek word *metanoia* which suggests a spiritual transformation in the way we think; that is, a change of mind that changes the way we act. Biblically, it is noted as “renew your mind” (Rms. 12:1-2; 8:6, Phil.4:8, 2 Cor.4:16, Eph.4:3) and “set your mind on things above” (Col.3:3). Life is a series of experiences that continually challenge us to rethink old suppositions and to elevate our perception of reality.

Thorneloe University is an Anglican school of theological located in Sudbury. It offers many online courses that can be taken for a credit (marked for application toward a degree) or as non-credit (assignments are commented on for your instruction). Course costs are tax deductible. A single course runs for about three months with reading assignments and usually two or three short essays about the readings. Depending on the depth of interest, a course may require 6-12 hours a week to complete.

Courses at Thorneloe are progressive with 1000 series courses being introductory and 2000, 3000, 4000, series being more in depth. Topics range from: Introduction to the Bible



THORNELOE
UNIVERSITY

AT LAURENTIAN

(Old or New Testament); books of the Bible; Christianity/religion in context of: Canada, Spirituality, Violence, or Women; Anglicanism; Theology; and many more. You choose what you are interested in. Often there is an opportunity to communicate with fellow students online.

Christians today are inundated with many Tela-Evangelists who present Christianity from a fundamentalist perspective. There are other perspectives. Thorneloe offers students an opportunity to explore the depth of Christianity/religion and to grasp an understanding of the development of biblical thought. A development that continues into our times. “When the Spirit of truth comes, he will guide you into all truth” (Jn.16:13). We never know the fullness of Christianity; it is a journey into repentance. Thorneloe offers a way to become a more knowledgeable Christian.

Information about courses can be accessed at: <https://www.thorneloe.ca/programs/school-of-theology>

I am available to answer questions you may have about my experience at Thorneloe.

Submitted by: Dale Sparkes



At present, it would seem that, with limited number of Sundays with Eucharist and few special services, the work of the Altar Guild is minimal. It certainly has decreased to some extent but there is still much to be done. During week prior to Easter Sunday we had responsibilities such as making and distributing Palm Crosses, preparing the church for Palm Sunday, Maundy Thursday, Good Friday and Easter Sunday. On the Saturday before Easter we gathered together

to prepare the church for Sunday with vases of flowers and pots of Lilies. The next event will be preparing the church for Pentecost with balloons and banners. Summer will give us time to plan into the Fall for such events such as Harvest Sunday.

In this time with no incumbent, Gathering Table has been fortunate to have several Sundays with Eucharist and with each presider, the Altar Guild has learned to adapt to various preferences for each set up.

We do need new members and now is an excellent time to join us when we have time to train and mentor anyone joining us. This is an important part of our church life so please consider working us to keep it a strong and vital mission.



PWRDF

The Primate's World Relief and Development Fund

Working towards a truly just, healthy and peaceful world

PWRDF is supporting Ukrainians forced to flee their homes due to the Russian invasion. PWRDF previously allocated \$100,000 to the ACT Alliance (Acting Churches Together) appeal supporting the work of Hungarian Interchurch Aid (HIA). PWRDF has now also strengthened support to ACT Ukraine Appeal, with help from MCIC (Manitoba Council for International Cooperation). Please read the entire story on pwrdf.org

As the war began on February 24, 2022, tens of thousands of Ukrainians fled for safety elsewhere in Ukraine or to neighbouring countries. HIA has been working with refugees at the Ukraine/Hungary border. A HIA delegation visited Southeastern Ukraine recently and delivered aid- in total, almost 12 tons of relief.

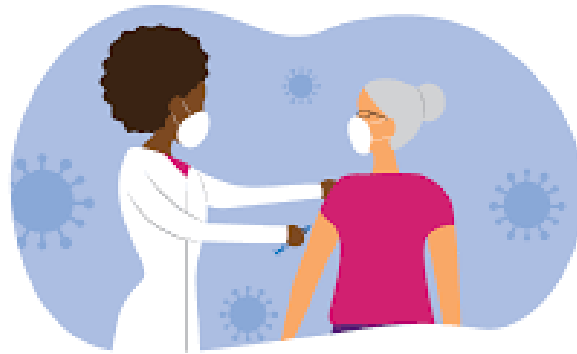
As well as funding work with Ukrainian refugees fleeing to Hungary and Moldova, new partnerships have been developed with partners on the ground for safe and efficient use of funds. The newest partner is Initiate E+ which is focusing on medical needs around Kiev. It is reported that 75% of the wounded are civilians.



Please pray for an end to this terrible war and give as you are able.

How To Give: To make a donation to this response, go to pwrdf.org/give-today and click on **Response in Ukraine**. You may also donate by phone at 416-822-9083 or leave a voicemail toll-free at 1-866-308-7973 and they will return your call, or mail your cheque to PWRDF, 80 Hayden, 3rd floor, Toronto, Ontario, M4Y 3G2. Please mark **Ukraine** in the memo field.

*Archbishop Anne encourages us to get our COVID-19 vaccinations and in thanksgiving for this, to **PAY IT FORWARD** by making a donation to **PWRDF's Vaccine Equity Fund**. Wealthier countries donate vaccines to less affluent countries, but additional funding is required for transportation, safe storage of the vaccine, and the running of clinics. PWRDF's overseas partners receive such funding through the Vaccine Equity Fund. So, get your jab, donate to the Vaccine Equity Fund, and receive a thank you tree ornament from the Deanery. See the table at the back of Gathering Table.*



You may donate online by going to pwrdf.org/give-today and click on **Vaccine Equity Fund**. Or phone Donor Relations Officer Mike Ziemerink at 416-822-9083, or leave a voicemail toll-free at 1-866-308-7973 and your call will be returned. Or send a cheque with "Vaccine Equity Fund" in the memo field to PWRDF, 80 Hayden St, 3rd floor, Toronto, Ontario, M4Y 3G2

This year marks the fifth anniversary of the **World of Gifts**, and another opportunity for you to support PWRDF and its partners in climate action, food security, emergency relief, clean water, gender empowerment and Indigenous programs. You can download the World of Gifts guide or shop online to make your gifts 24/7. You can use these gifts for birthdays, anniversaries, etc.

When you visit the PWRDF website (pwrdf.org) you will discover the many other worthwhile projects worldwide that PWRDF is involved in.

For more information contact:

Linda Rintamaki (rep) linjrin@tbaytel.net



Caring for seafarers
around the world

Mission to Seafarers – Thunder Bay

On Wednesday May 17, The Mission to Seafarers held its Annual General Meeting on Zoom with the Chairperson, the Chaplain and the Secretary together at the Centre. This bit of hybrid meeting felt like we were inching closer to in person meetings again.

The Port of Thunder Bay opened this year on April 18 and though there are still a number of COVID restrictions in place, the Mission was able to assist crew members when needed. Rev'd Judith Alltree, the Exec Director of the Southern Ontario branch (our branch) who participated in the meeting was impressed by the amount of work and assistance that was achieved here in Thunder Bay.

This was another successful year for the meat sale with a profit of \$1,838.16. A thank you to everyone from Gathering Table who purchased meat and made this possible. There are plans al-

ready underway for next year's sale.

Upcoming Events: For the past two years we have not been able to gather for some of our events so this year we are pleased to be able to once again hold the following, in person, events:

(1) The Blessing of the Fleet: the annual Blessing of the Fleet will take place on Saturday, June 25 and the Macgillvary Pipe Band will be participating. (time TBA)

(2) Open House: an open house is planned for Sept. 25 from 1:30 to 4:00 pm. This is an opportunity to visit the Centre, enjoy a light lunch and learn more about the mission and activities of the Mission to Seafarers.

(3) Annual Fundraising Dinner: The dinner will take place on October 28 at the Current River community Centre. Tickets will soon be available for sale by the parish representatives.

This past year, many parishioners at Gathering Table generously donated to the Christmas bags for the sailors and this project will continue for the 2022, so now is a good time to start putting some items aside or begin those knitting projects. I already have several hand knit toques donated!

Have a great summer.

Margaret Boone, Mission to Seafarers Rep.



Caring for seafarers
around the world

To the Parish of Gathering Table.
Thank you for your generous support of the Mission to Seafarers Christmas Gift Bags.
328 bags were prepared and 257 gift bags were delivered to ships that could be visited.
On behalf of the Christmas Gift Bag Committee

Susan Zinsak Pike
Chair

Still Seeking Volunteers to work on the Technology Production Team

If the past year as taught us anything, the Sunday broadcasts are an integral part of our services and church life. To this end, we are in need of volunteers to make the experience an even better one.

The roles are:

Camera and Media using Vmix (2) and

Projection Media Visuals using Powerpoint (2)

and **Sound** (2) using an Allen & Heath QU Chrome Edition Mixer via an iPad.



Please, if you are interested or if you know of someone who would be interested, please contact Sharon Corston at 355-1549 or sjcorston@gmail.com.



CAMP GITCHIGOMEE

We will be open this summer! Yay! ☺

After two years of not running camps due to the pandemic, dates for the camps are:

Teen Retreat (ages 13-17) June 24 - 26

Senior (ages 13-15) July 3- 9

Junior (ages 7-9) July 10 – 16

Intermediate (ages 10-12) July 17 – 23

Please know that the Board of Directors has developed a vaccine policy and COVID-19 safety plan to protect the safety of all participants.

If you know of a child that would like to attend, please go on-line to register at:

<https://www.campgitchigomee.ca/> Some bursaries are available.

It will be a busy spring and summer; getting the camp ready, recruiting and training staff (Kitchen and waterfront staff are paid), running the camps, having an accreditation visit from the Ontario Camps Association, holding our 75th +2 anniversary weekend on the August long weekend and renting the camp out.

If you have camping stories and memories to share, or would like to attend the Anniversary weekend (no cost), please let us know. If you wish to help out in any way (financially, volunteering, praying – please do so.

Thanks much!

Roberta Wolfe, Jim Sutton – Gathering Table reps for Camp Gitchigomee



The prayer chain continues to be active, responding in a timely and confidential manner to all prayer requests that are received.

If you would like to be a part of this ministry or you have a prayer request, please contact Sheila Chisholm

by email (chisholmsheilak@gmail.com),

by text (306-240-0771) or

by phone (787-0253).

You can also contact the office at 345-6898.



or Visitation.

Pastoral care visits will continue to be restricted to emergency situations.

Please contact the office at 345-6898 if such a situation arises.

Our Financial Health

A look at the first quarter of 2022. Please remember when looking at the figures, that although it looks like we are doing well, we are not paying a minister. It is best to compare the two years and look at our budgeted numbers.

Gathering Table Income Statement comparison and Budget targets	<u>Jan-Mar 2021 Actual</u>	<u>Jan-Mar 2022 Actual</u>	<u>Jan-Mar 2022 Budget</u>
REVENUE			
Revenue - Apportioned			
Parochial Revenue - Apportioned			
4020 Parochial Envelopes	13,253.00	9,442.00	17,500.00
4030 Parochial EOP	15,230.00	15,231.00	15,000.00
4040 Parochial Open	0.00	25.10	50.00
4050 Initial Offering	160.00	30.00	37.50
Parochial Revenue - Apportioned	<u>28,643.00</u>	<u>24,728.10</u>	<u>32,587.50</u>
Total Revenue Apportioned	<u>28,643.00</u>	<u>24,728.10</u>	<u>32,587.50</u>
Wage Subsidy Entitlement			
Covid Wage Subsidy			
4095 Wage Subsidy Received	<u>1,828.32</u>	<u>0.00</u>	<u>1,250.00</u>
Total Covid Wage Subsidy	<u>1,828.32</u>	<u>0.00</u>	<u>1,250.00</u>
Total Wage Subsidy Entitlement	<u>1,828.32</u>	<u>0.00</u>	<u>1,250.00</u>
Other Revenue			
Fund Revenue			
4110 Accessibility and Flooring	0.00	0.00	0.00
4115 Altar Guild	0.00	0.00	0.00
4120 Building/Property	765.00	1,204.98	735.00
4130 Gifts in Kind	0.00	0.00	300.00
4135 Hate Grant	0.00	7,500.00	0.00
4140 In Memory of Donations	0.00	75.00	125.00
4150 Incumbent's Discretionary Fund	0.00	100.00	125.00
4160 Miscellaneous	0.00	200.00	25.00
4170 Music - General	17,596.27	17,074.52	250.00
4210 Organ and Piano Repairs	1,000.00	667.20	250.00
4230 Special Givings - Thanksgiving	0.00	0.00	25.00
4240 Special Givings - Christmas	20.00	0.00	400.00
4250 Child and Youth (Sunday School)	<u>0.00</u>	<u>0.00</u>	<u>37.50</u>
Total Fund Revenue	<u>19,381.27</u>	<u>26,821.70</u>	<u>2,272.50</u>
Mission Revenue			
4420 Anglican Lutheran Group	0.00	0.00	5.00
4430 Camp Gitchigomee	0.00	0.00	12.50
4435 CLAY	0.00	0.00	12.50
4440 Coffee Hour	225.33	285.33	125.00
4442 Coldest Night of the Year	0.00	0.00	0.00
4445 Craft Group	25.00	0.00	0.00
4450 Food Cupboard	5,651.75	7,438.78	1,750.00
4460 Hospitality (Congregational Events)	916.06	916.06	125.00
4465 Library	0.00	0.00	0.00
4470 Internet Mission/Technology	0.00	836.67	250.00
4475 Mission to Seafarers	0.00	0.00	12.50
4480 Parish Gardens	297.04	355.43	87.50

**Gathering Table Income Statement
comparison and Budget targets**

	<u>Jan-Mar 2021 Actual</u>	<u>Jan-Mar 2022 Actual</u>	<u>Jan-Mar 2022 Budget</u>
REVENUE			
4490 Parish Nursing/Church Family Care	213.00	213.00	25.00
4500 Prayer Shawl	92.85	181.34	25.00
4510 PWRDF	331.00	362.00	415.50
4520 Special Givings - Lent	0.00	1,225.00	37.50
Mission Revenue Total	<u>7,752.03</u>	<u>11,813.61</u>	<u>2,883.00</u>
Fundraising Revenue			
4610 Facility Use	0.00	300.00	125.00
4615 Funeral/Receptions	0.00	0.00	250.00
4620 Nearly New	0.00	0.00	125.00
4635 Shrove Tuesday Pancake Supper	0.00	0.00	0.00
4640 Other	0.00	0.00	12.50
Total Fundraising Revenue	<u>0.00</u>	<u>300.00</u>	<u>512.50</u>
Cost Recovery			
4710 Calendar Sales	10.00	0.00	43.75
4712 Deanery	0.00	0.00	187.50
4715 Insurance	0.00	0.00	0.00
4725 Other	0.00	0.00	0.00
4730 Parking	2,505.18	2,725.18	180.00
4740 Photocopying	5.00	0.00	1.25
4750 Rectory Rent	0.00	3,482.43	900.00
Total Cost Recovery	<u>2,520.18</u>	<u>6,207.61</u>	<u>1,312.50</u>
Investment Income			
4802 IG Wealth - Church Investment	0.00	-587.57	500.00
4803 IG Wealth - Endowment Fund	0.00	1,221.53	500.00
4804 IG Wealth - Stipend Fund	0.00	1.69	125.00
4805 Interest Income - Coffierfin	0.00	0.00	0.00
4810 Interest Income - Copperfin HIS	1.39	0.41	1.25
4812 Interest Income - CIBC	0.00	0.00	0.00
4815 Dividend - Copperfin	0.00	0.00	0.00
4820 Solar Panel Revenue	924.65	1,816.36	2,250.00
Total Investment Income	<u>926.04</u>	<u>2,452.42</u>	<u>3,376.25</u>
Diocesan Consolidated Fund			
4910 Interest - SJ Rectory Sale	0.00	0.00	4,125.00
4920 Interest - SL Church Sale	0.00	0.00	125.00
4925 Interest - SL Rectory Sale	0.00	0.00	0.00
4927 Yeoman Divinity Fund	0.00	0.00	1,000.00
Total Diocesan Consolidated Fund	<u>0.00</u>	<u>0.00</u>	<u>5,250.00</u>
Capital Revenue			
4950 Capital Transfer	0.00	0.00	0.00
4960 Capital Reserves	0.00	0.00	0.00
Total Capital Revenue	<u>0.00</u>	<u>0.00</u>	<u>0.00</u>
Total Other Revenues	<u>30,579.52</u>	<u>47,595.34</u>	<u>15,606.75</u>
TOTAL REVENUE	<u>61,050.84</u>	<u>72,323.44</u>	<u>49,444.25</u>

**Gathering Table Income Statement
comparison and Budget targets**

**Jan-Mar
2021 Actual** **Jan-Mar
2022 Actual** **Jan-Mar
2022 Budget**

EXPENSES

Expense

Salaries and Related Expenses

5020	Salaries - Rector	9,039.18	0.00	5,500.00
5030	Salaries - Secretary	1,703.07	1,703.52	1,750.00
5040	Contract - Sexton	0.00	480.00	325.00
5050	Contract - Organist	0.00	0.00	0.00
5070	Wage Expense Account	1,828.32	0.00	2.50
5080	Honorariums	0.00	0.00	0.00
5090	Honorariums - Clergy	0.00	600.00	450.00
5100	Honorariums - Pianist	0.00	0.00	250.00
5110	Honorariums - Treasurer	0.00	0.00	125.00
5120	Car Allowance	0.00	0.00	0.00
5130	Continuing Education	100.00	0.00	112.50
5140	CPIC charge (CRC every 3 years)	0.00	0.00	12.50
5150	CPP	498.81	25.99	300.00
5160	EI	386.64	11.69	162.50
5170	Employee Assistance Program	6.36	0.00	3.13
5180	Extended Health Care	1,048.08	0.00	475.00
5190	Group Dental Plan	98.61	0.00	51.50
5200	Group Life Insurance	43.65	0.00	25.00
5210	Honourary Assistant's Mileage	0.00	0.00	62.50
5220	Long Term Disability	899.16	0.00	28.13
5230	Payroll Preparation Charge	80.00	15.00	24.50
5240	Pension Administration Fee	-11.67	0.00	122.50
5250	Pension Plan	2,107.59	0.00	875.00
5260	Supplemental Employee Benefit	45.00	0.00	22.50
5270	Travel Monthly - Rector	1,880.64	0.00	975.00
5280	Travel Pool - Rector	56.43	0.00	28.75
5285	Rector's Housing Allowance	56.43	0.00	2,500.00

	Total Salaries and Related Expenses	19,866.30	2,836.20	14,183.50
--	--	------------------	-----------------	------------------

General Purposes Expenses

5305	DOA ACW Ministry and Mission	0.00	0.00	0.00
5310	Advertising	0.00	0.00	25.00
5315	Bank Charges	20.01	60.08	26.25
5325	Choir Expense	0.00	0.00	0.00
5330	Church Calendars	0.00	0.00	40.00
5333	Concurrence Interview/Expenses	0.00	0.00	500.00
5335	Deanery Fees/Expenses	574.97	532.28	300.00
5340	Diocesan Expenses Other	0.00	0.00	0.00
5345	Mail/Freight/Postage	700.13	700.13	500.00
5350	Miscellaneous Expense	0.00	0.00	0.00
5355	Monthly EOP Program Fees	122.00	111.60	117.50
5360	Office Expense	796.11	528.06	1,000.00
5365	Pastoral Supplies	0.00	0.00	18.75
5370	Photocopier	135.12	573.48	187.50

**Gathering Table Income Statement
comparison and Budget targets**

	Jan-Mar 2021 Actual	Jan-Mar 2022 Actual	Jan-Mar 2022 Budget
EXPENSES			
5375 Synod - Youth	0.00	0.00	0.00
5380 Synod Expense - Clergy School	0.00	0.00	0.00
5390 Time with Youth/Pastor's Youth Exp	0.00	0.00	25.00
Total General Purpose Expenses	2,348.34	2,505.63	2,740.00
Property Expenses - Church			
5405 Church - Heating	4,664.37	542.68	2,250.00
5407 Church - Hydro	1,294.03	1,012.88	1,000.00
5409 Church - Insurance	0.00	0.00	0.00
5411 Church - Internet	437.50	436.56	450.00
5413 Church - Maintenance and Repair	625.02	31.71	625.00
5415 Church - Phone	104.79	104.79	112.50
5417 Church Hall - Phone	104.76	104.76	112.50
5418 Church - Pastor's Office	104.76	104.76	112.50
5419 Church - Pastor's Cell	147.19	0.00	50.00
5421 Church - Security Monitoring	0.00	0.00	75.00
5423 Church - Water	252.52	268.42	275.00
5425 Organ - Hydro	47.58	51.22	75.00
5427 Parish House - Hydro	63.26	71.52	81.25
Total Property Expenses - Church	7,845.78	2,729.30	5,218.75
Property Expenses - Rectory			
5462 Rectory - Heating	853.81	427.71	212.50
5464 Rectory - Hydro	283.73	313.24	150.00
5466 Rectory - Insurance	0.00	0.00	0.00
5468 Rectory - Internet	155.73	302.31	87.50
5470 Rectory - Maintenance and Repair	0.00	179.81	68.75
5472 Rectory - Phone	167.99	168.21	78.75
5474 Rectory - Security Monitoring	55.72	56.13	53.00
5476 Rectory - CTB Property Taxes	320.85	331.00	190.00
5478 Rectory - Water	390.57	313.69	162.50
5480 Rectory - Water Heater Rental	105.45	121.00	50.00
Total Property Expenses - Rectory	2,333.85	2,213.10	1,053.00
Property Expenses - Other			
5502 Cleaning Supplies	84.19	0.00	87.50
5504 Insurance - all	470.25	0.00	3,250.00
5506 Maintenance Supplies	0.00	0.00	50.00
5508 Snow Plowing/Shovelling	90.40	1,444.76	75.00
5510 Yard Maintenance	0.00	0.00	75.00
Total Property Expenses - Other	644.84	1,444.76	3,537.50
Diocesan Obligations			
5610 Apportionment	8,226.36	6,813.73	9,026.74
5615 Clergy Moving Loan	0.00	0.00	2,500.00
5620 Solar Panel Loan	1,184.75	1,256.57	2,000.00
5620 Solar Panel Loan Interest	648.44	559.79	625.00
Total Diocesan Obligations	10,059.55	8,630.09	14,151.74

Gathering Table Income Statement comparison and Budget targets

	<u>Jan-Mar 2021 Actual</u>	<u>Jan-Mar 2022 Actual</u>	<u>Jan-Mar 2022 Budget</u>
EXPENSES			
Fund Expenses			
5660	0.00	0.00	125.00
5663	0.00	0.00	6.25
5665	0.00	0.00	0.00
5667	0.00	0.00	0.00
5670	0.00	0.00	125.00
5673	0.00	0.00	25.00
5675	0.00	0.00	125.00
5695	0.00	0.00	250.00
5700	0.00	0.00	37.50
	<u>0.00</u>	<u>0.00</u>	<u>693.75</u>
Mission Expenses			
5760	0.00	0.00	5.00
5765	0.00	0.00	12.50
5767	0.00	0.00	12.50
5770	0.00	0.00	125.00
5773	0.00	0.00	0.00
5775	0.00	615.91	1,750.00
5780	0.00	0.00	125.00
5781	0.00	0.00	250.00
5782	0.00	0.00	12.50
5783	0.00	0.00	87.50
5785	0.00	0.00	25.00
5790	0.00	0.00	25.00
5795	0.00	0.00	6.25
5800	391.00	362.00	425.00
5810	0.00	0.00	37.50
	<u>391.00</u>	<u>977.91</u>	<u>2,898.75</u>
Fundraising Expenses			
5853	0.00	0.00	125.00
5855	0.00	0.00	250.00
5860	0.00	0.00	0.00
5870	0.00	0.00	0.00
5875	0.00	0.00	12.50
	<u>0.00</u>	<u>0.00</u>	<u>387.50</u>
Total Expenses	<u>43,489.66</u>	<u>21,336.99</u>	<u>44,864.49</u>
TOTAL EXPENSE	<u>43,489.66</u>	<u>21,336.99</u>	<u>44,864.49</u>
NET INCOME	<u>17,561.18</u>	<u>50,986.45</u>	<u>4,579.76</u>





228 Pearl Street
Thunder Bay, ON P7B 1E4

Phone: 807-345-6898
E-mail: office@gatheringtable.ca
Facebook: Gathering Table

Hall: 807-345-6088
Web: gatheringtable.ca

Service Time: Sunday at 10:00 am
Food Bank Open: 2nd and 4th Sundays starting at 11:30 am

Office Hours: Tuesday, Wednesday and Thursday 10:00am to 2:00 pm
Friday 8:00 am to noon

Pastor: Vacant
Phone:
Mobile:
Email:

Honorary Assistant: The Rev. Gail M. Clifton, M.Div.
Phone: 768-9865

Lay Readers: Kim Bienvenue, Rose Jardine, Brenda O'Neill , Richard Pepper, Frances Bennett-Sutton, Jim Sutton

Rector's Warden: David Reid
Deputy Rector's Warden: vacant
People's Warden: Jim Sutton
Deputy People's Warden: Sheila Chisholm

Co – Music Directors: Vacant (Organist) and Donna Hamill (Pianist)